



P: +(254) 798 937 840

E: info@amech.co.ke

W: amech.co.ke

P.O. Box 366-00902 Kikuyu

# CAPABILITY STATEMENT

**Company Number:**

BN-JRCGDXE7



## WHAT WE OFFER

### ● Project Coordination

A single point of coordination for clients, consultants & contractors.

### ● Design Delivery Coordination

Coordination of all design and specialist consultant.

### ● Digital Engineering

Advanced visualization, BIM, virtual design and construction.

### ● Construction Consultancy

Independent technical oversight, inspections, reporting and construction support

## Pharma Tech Innovation Business Potential Unravelled

We provide integrated project delivery solutions through planning, design coordination, digital engineering, procurement support, project management, construction supervision and technical consultancy. By combining technology, technical expertise and structured project delivery methodologies, we help clients make informed decisions, manage risks and achieve successful project outcomes from concept to completion.

Our approach leverages digital engineering technologies such as Building Information Modelling (BIM), 3D Visualization and Virtual Design & Construction (VDC) to improve project planning, stakeholder coordination, communication and decision-making throughout the project lifecycle.

We serve as a single point of coordination for clients, consultants, contractors and other stakeholders, ensuring projects are delivered efficiently, professionally and in alignment with project objectives.

- Our team and professional network combine expertise in project coordination, project management, digital engineering and construction consultancy to deliver efficient, well-coordinated and successful projects.
- We serve homeowners, property developers, commercial clients, institutions and organizations by providing integrated project delivery solutions tailored to their unique requirements and objectives.
- We are committed to professionalism, quality, transparency and continuous improvement, ensuring every project receives the attention and expertise required for successful delivery.

## EXECUTIVE SUMMARY



Alternate Mechanics™ is a Kenya-based Digital Engineering, Project Coordination and Project Management Consultancy helping clients transform project ideas into successfully delivered developments.

We assist clients in transforming project ideas into successfully delivered developments through planning, project coordination, digital engineering, visualization, procurement support, project management and construction supervision.



## WHO WE SERVE

- ★ **Property Developers:** Supporting residential, commercial and mixed-use developments through project planning, coordination, digital engineering and project management
- ★ **Homeowners & Private Clients:** Assisting individuals and families in transforming their development ideas into successfully delivered projects through structured planning.
- ★ **Industry professionals:** Delivering digital engineering, visualization and project coordination services that improve planning, communication and project execution.
- ★ **Commercial & corporate Clients:** Providing project management, construction consultancy and technical advisory services for commercial developments, fit-outs, renovations and capital projects.



## DIFFERENTIATORS

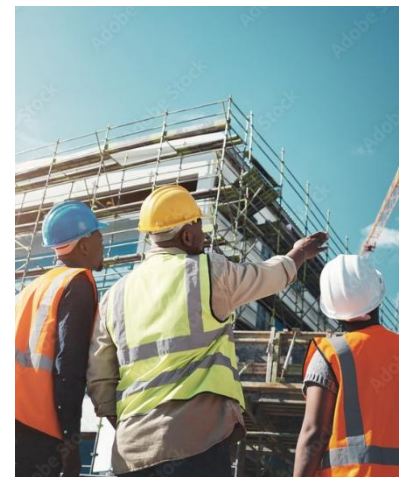
- ★ **Integrated Project Delivery:** We provide a single point of coordination for clients, consultants, contractors and stakeholders, simplifying project delivery and improving communication throughout the project lifecycle.
- ★ **Digital Engineering Approach:** We leverage Building Information Modelling (BIM), Virtual Design & Construction (VDC), 3D visualization and other digital technologies to improve planning, coordination, decision-making and project
- ★ **Structured Project Management:** Our projects are delivered using proven project management methodologies that emphasize planning, risk management, progress monitoring, accountability and continuous stakeholder engagement.
- ★ **Client-Centered Solutions:** Every project is approached with a focus on the client's objectives, ensuring tailored solutions, transparent communication and measurable value from concept to completion.

## STRENGTHS AND COMMITMENTS

- **Technology-driven Project delivery:** We utilize digital engineering tools such as BIM & project management technologies to improve planning & coordination
- **Integrated Project Coordination:** we bring together all stakeholders under a coordinated delivery framework that promotes effective communication.
- **Flexible Specialist Network:** Through collaboration with qualified professionals, we are able to assemble the right expertise for each project.
- **Continuous Improvement:** We embrace innovation, learning and industry best practices to ensure our services remain effective, relevant and aligned.

## REGISTRATION, COMPLIANCE & PROFESSIONAL COMMITMENT

- ☑ Registered Business Entity in the Republic of Kenya.
- ☑ Committed to delivering services in accordance with applicable Kenyan laws, regulations and industry best practices.
- ☑ Collaborates with appropriately qualified and registered professionals where statutory design, engineering and specialist services are required.
- ☑ Utilizes industry-standard digital engineering and project management tools to support efficient project delivery and stakeholder coordination.
- ☑ Committed to quality, transparency, accountability and continuous improvement across all project engagements.
- ☑ Maintains professional standards in project coordination, construction consultancy, digital engineering and technical advisory services



## REPRESENTATIVE EXPERIENCE

**Residential Development Support:** Provided project planning, visualization and coordination services to support residential development projects from concept development through project implementation.

**Construction Monitoring & Advisory:** Supported project execution through site observations, progress monitoring and technical advisory services aimed at improving construction quality and project outcomes.